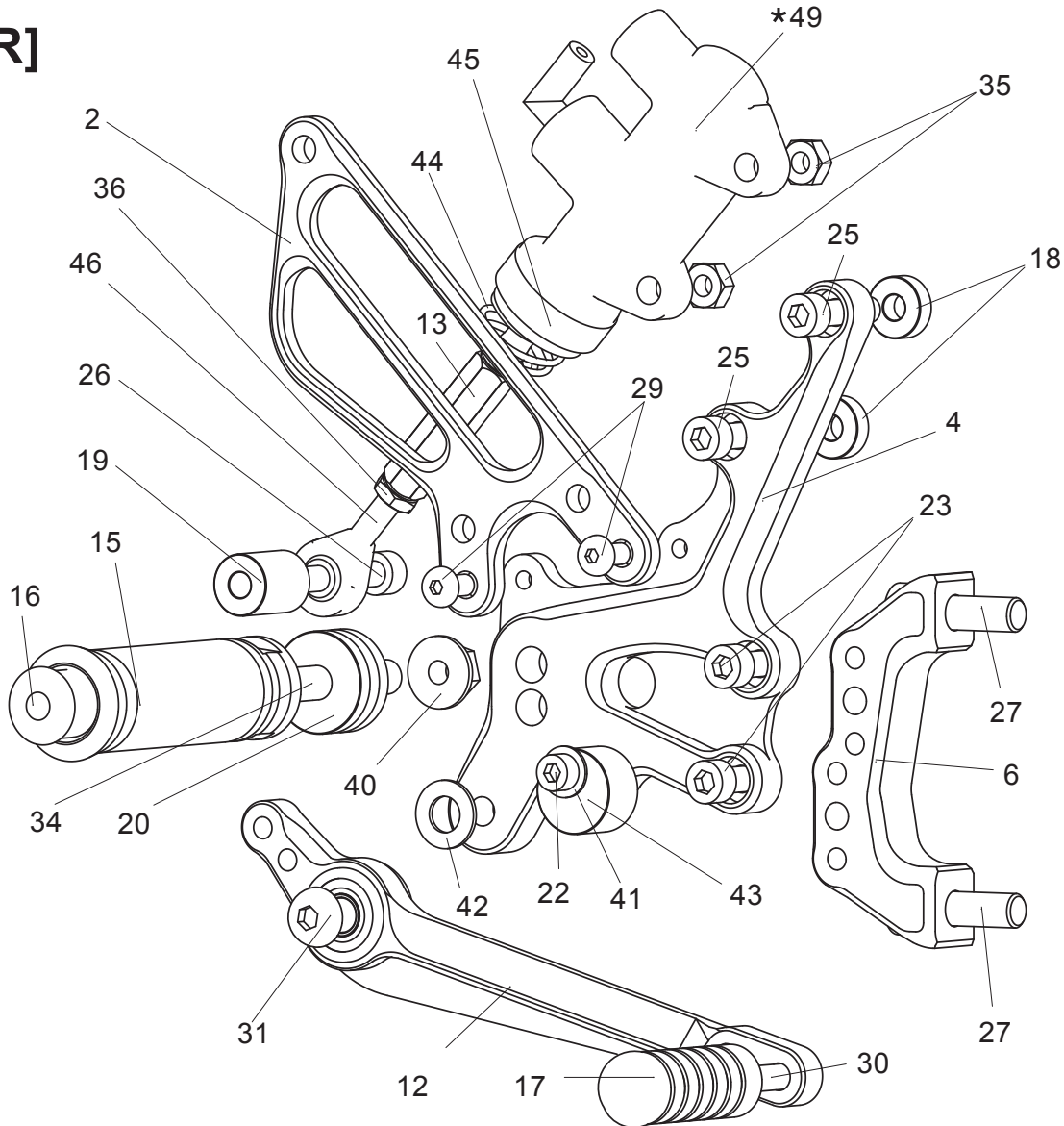


DUCATI PANIGALE (899 / 959 / 1199 / 1299)

REAR SETS (part# D-1199RS / D-1299RS) (Design Version 11-16)

[R]



- 2. HEEL GUARD [R] [HG-3R]
- 4. STEP PLATE [R] [D-1199SP-R]
- 6. BASE PLATE [R] [D-1199BP-R]
- 12. BRAKE PEDAL [BPD-205]
- 13. PUSH ROD 80(SV) [PRD-1199]
- 14. BEARING COLLAR 5 [PEGBGCLR-5SB]
- 15. FOOT PEG [PEG]
- 16. FOOT PEG END CAP [ST-002]
- 17. PEDAL TIP (DELRIN) [ST-001D18]
- 18. COLLAR 5-6(BK) [HGCLR-5] x 2
- 19. ROD END COLLAR 23-6(BK) [RDED-CLR23]
- 20. FOOT PEG COLLAR 12 [PEG-CLR12]
- 22. SOCKET HEAD M5-20mm [SBT-M520]
- 23. SOCKET HEAD M6-16mm [SBT-M616] x 2
- 25. SOCKET HEAD M6-25mm [SBT-M625] x 2
- 26. HEX HEAD M6-40mm [HBT-M640]
- 27. SOCKET HEAD M8-25mm [SBT-M825] x 2
- 29. BUTTON HEAD M5-10mm [BBT-M510] x 2
- 30. BUTTON HEAD M6-20mm [BBT-M620]
- 31. BUTTON HEAD M8-25mm [BBT-M825]
- 34. STUD BOLT M8-45mm [STBT-45]
- 35. NUT M6 [NUT-6] x 2
- 36. JAM NUT M6 [JNT-6]
- 40. FLANGE NUT M8 [FNT-8]
- 41. WASHER M5 [WS-5]
- 43. BRAKE PEDAL STOPPER 12.5 (DELRIN) [BPD-STOPPER]
- 44. RETURN SPRING 20 [RS-RSP2]
- 45. RETURN SPRING COLLAR [RS-RSCLR]
- 46. MALE ROD END M6 [RDED-M6]
- * 49. REAR MASTER CYLINDER (DUCATI PART)

Not Pictured:
BRAKE LIGHT SWITCH P-1.0 [BSW-1]